

Chelsea Arts Tower

545 West 25th Street, New York, NY



Glanzrock
Realty
Services

First Class Condominium for Lease or Sale



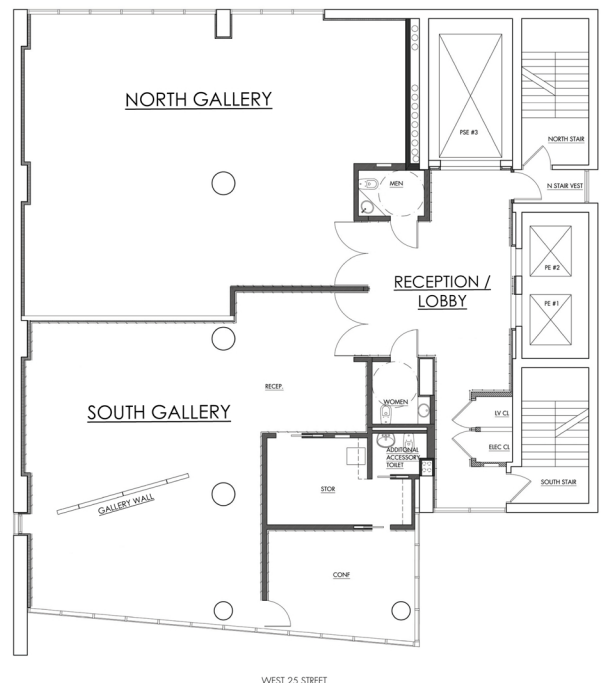
As exclusive sublease agents, we invite your cooperation in subleasing the following space:

4,140 SF—ENTIRE 6th Floor

(2,170 SF—Space A/South side)

(1,970 SF—Space B/North side)

- Beautiful, award winning office building with a lobby concierge; full time superintendent; 24/7 access
- High end art gallery, fashion showrooms and office tenants
- Centralized HVAC
- State-of-the-art security



Cindy Farkas Glanzrock
President

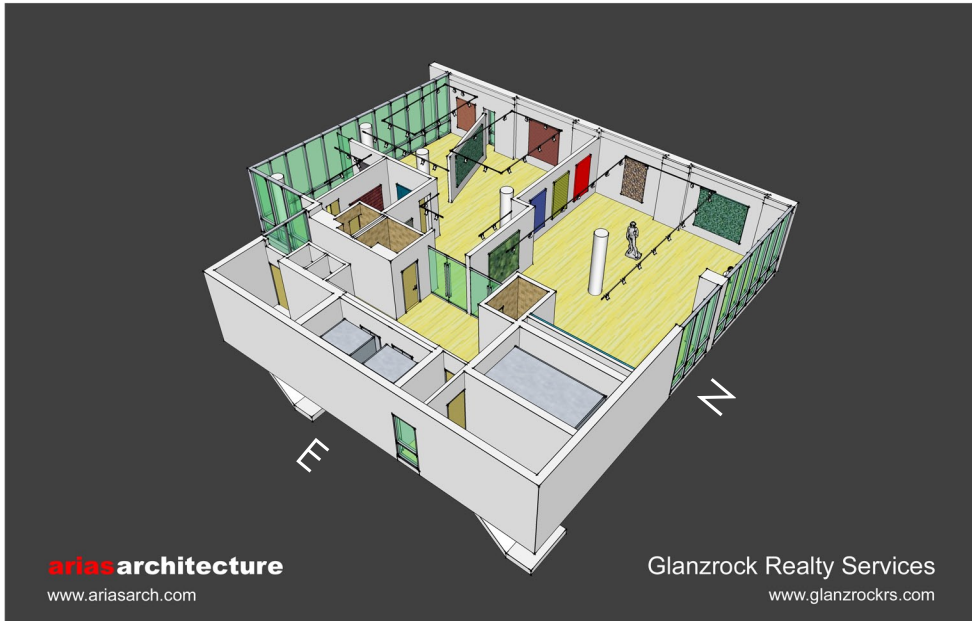
201 East 66th Street, Suite 15-F
New York, NY 10065

Office: (212) 249 4838

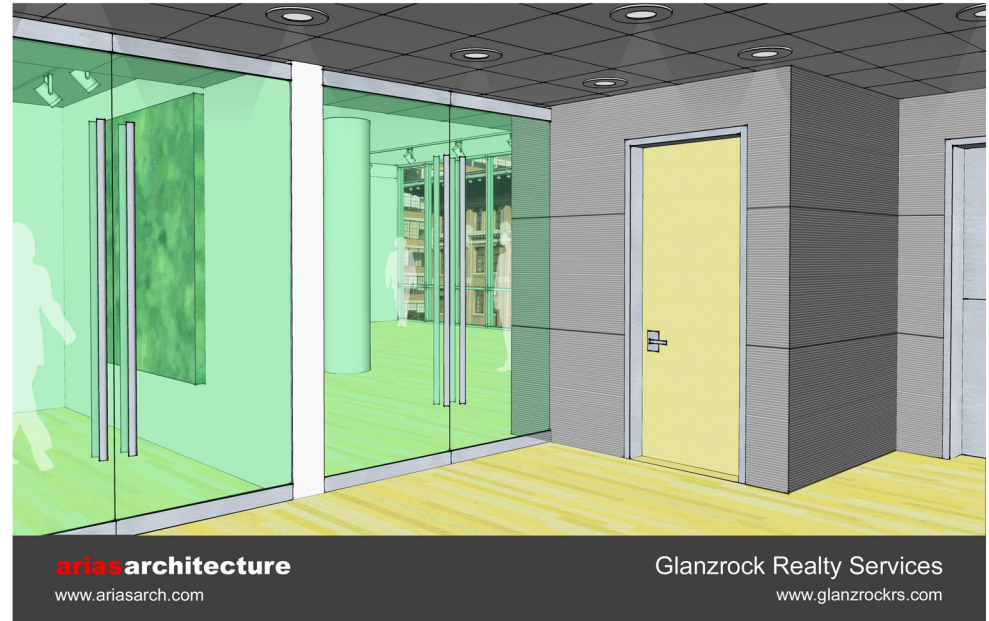
Mobile: (917) 502 4323

Email: cindy.glanzrock@gmail.com

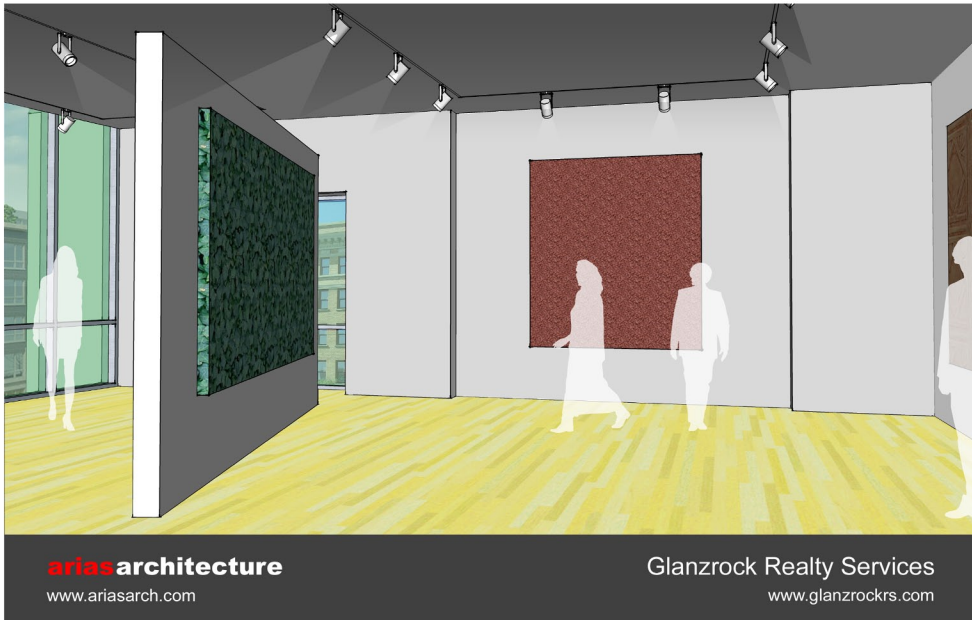
www.GlanzrockRS.com



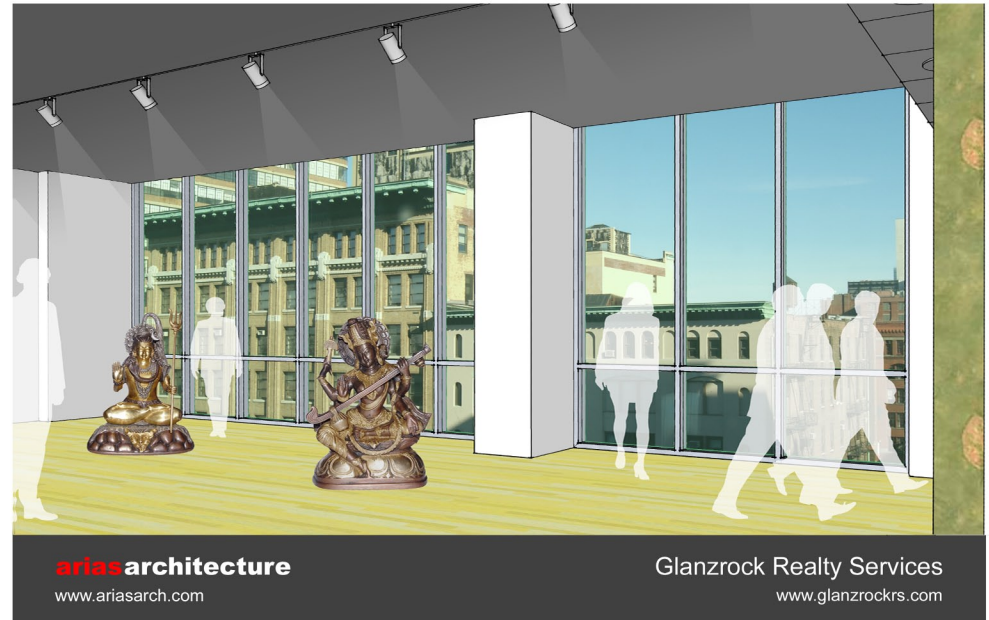
FLOOR PLAN



RECEPTION / LOBBY



NORTH SIDE



SOUTH SIDE